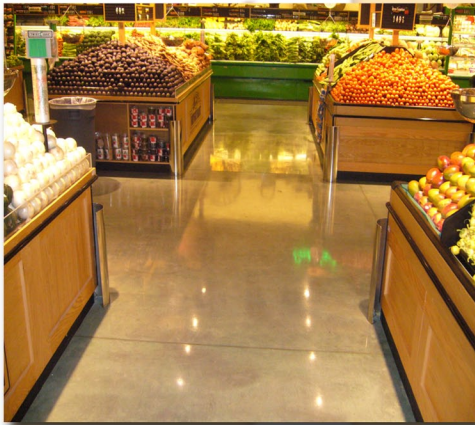


PMW CONCRETE SEALER PRODUCTS

Shur-Seal® is a colorless, transparent, water-based sodium silicate that penetrates concrete floors. This preserves, protects and strengthens concrete floors.

Shur-Seal® may be used to cure, seal, harden, dust-proof and alkali-proof concrete floors. Does not substantially effect the sheen of the concrete.

Shur-Hard actuates a chemical hardening process which quickly, economically and effectively protects new or old concrete and terrazzo floors from the constant grinding and abrading action of rolling loads, and foot traffic. (Pores and capillaries, created by water evaporation during the curing period, are filled with a chemically formed substance to produce density, durability, resistance to impact and freedom from concrete dust or normal deterioration.)



Thermo-Sheen is a non-yellowing, 20% solids acrylic cure & seal designed for garages, service stations, warehouses, manufacturing plants, food processing plants, or other areas where protection is desired.

Royal-Sheen is a non-yellowing, 25% solids acrylic cure & seal designed for new and old concrete floors. Royal-Sheen is an excellent top-coating and will cover most other finishes with a shine.

Acri-Sheen is a non-yellowing, 30% solids acrylic cure & seal designed for concrete floors, new and old—along with masonry, concrete blocks & bricks. Acri-Sheen may be used to seal and dust-proof all concrete floors. Won't peel or crack.

PMW EPOXY & URETHANE PRODUCTS

Epoxy-O-Sheen is a two component water based epoxy coating that exhibits excellent characteristics that rival solvent based products. This product has superb chemical resistance, abrasion resistance, and substrate penetration. Recommended for priming or coating concrete, wood or masonry.

***Epoxy-O-Sheen HS** is a two component 93% (+/- 1%) solids epoxy colored coating designed for applications where a high solids primer is needed before applying high solids or 100% solids topcoats for build coats over concrete. Recommended for a high build base coat on concrete or masonry.

***Epoxy-O-Sheen 100P** is a two component 100% (+/- 1%) solids epoxy colored coating designed for applications where a high build colorfast impact resistant floor is needed. Recommended for a high build topcoat or base coat on concrete or masonry.

***Epoxy-O-Sheen 100C** is a two component 100% solids epoxy seal coat that can be used either as a coating or filled with paint chips, marble chips and colored sand mixtures to provide an infinite array of color schemes or patterns. Recommended for warehouses, kitchens, restrooms, and other areas where either a high build clear product is needed or where a decorative filled floor is desired.

Ure-Sheen W is a two component water based catalyzed aliphatic high performance urethane emulsion sealer/topcoat that exhibits excellent abrasion resistance without the objectionable solvent odors associated with other urethane products. This product has an extremely fast set time and a very long pot life. Recommended for coating concrete or top-coating epoxy coatings. Do not use in immersion service or constant chemical exposure areas.

Ure-Sheen is a two component polyester/aliphatic polyurethane floor sealer that exhibits excellent characteristics for abrasion resistance, chemical resistance, flexibility, weathering and UV stability. Recommended for auto service centers, warehouses, computer rooms, laboratories, aircraft hangers, cafeterias, exterior tanks, indoor or outdoor service and chemical exposure areas.

Ure-Sheen CRU is a two component polyester/aliphatic polyurethane coating that exhibits excellent characteristics for abrasion resistance, chemical resistance, flexibility, weathering, and UV stability. Recommended for auto service centers, warehouses, computer rooms, laboratories, aircraft hangers, cafeterias, exterior tanks, indoor or outdoor service and chemical exposures areas.

***Ure-Sheen CRU CA** is a three component aliphatic urethane floor finish that exhibits excellent characteristics for abrasion resistance, chemical resistance, flexibility, weathering and UV stability. Recommended for auto service centers, warehouses, computer rooms, laboratories, aircraft hangers, cafeterias, indoor or outdoor service and chemical exposure areas. VOC content is less than 100 grams/liter.

*LEED Compliant (VOC content is less than 100 grams/liter)